

Unsheltered Homelessness

A Solutions Oriented Approach

LA County Encampment Resolution Efforts



**Chief
Executive
Office.**



County of Los Angeles
**Homeless
Initiative**

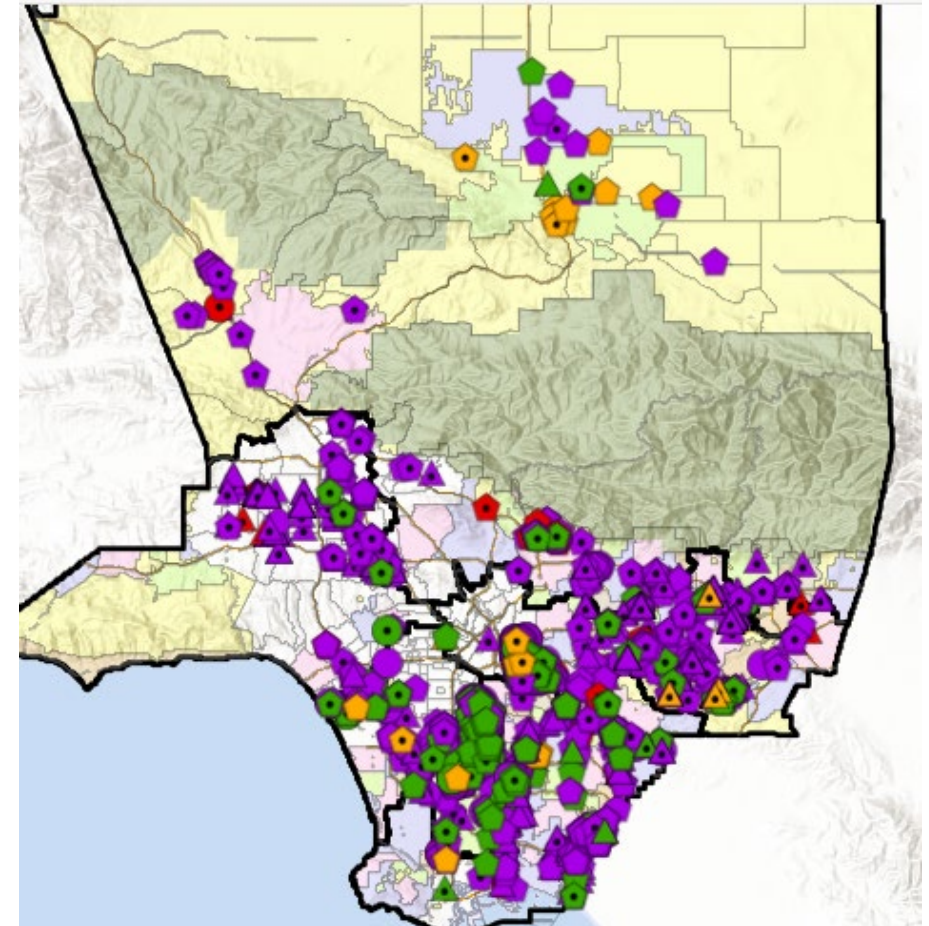
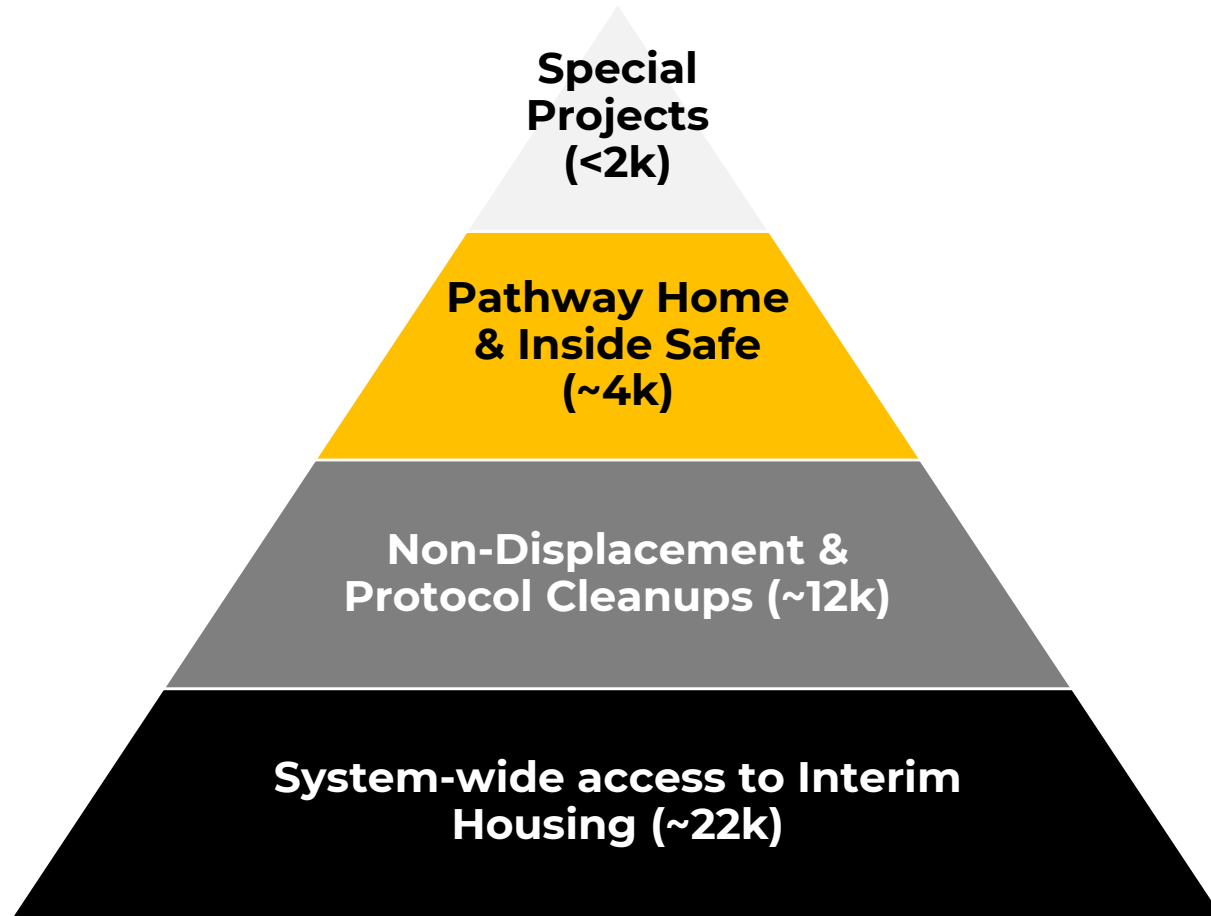
1 Emergency Declarations & Encampment Missions

- **December 12, 2022:** City of Los Angeles declared a State of Emergency on Homelessness:
 - Decrease in the number and size of encampments
 - Increased housing placements, affordable housing options and temporary and permanent housing units
 - Increase outside aid through access to mental health and substance use beds
 - Decrease the number of persons being evicted from existing housing units
 - Decrease the number of persons falling into homelessness
- **January 10, 2023:** LA County declared a State of Emergency on Homelessness with a focus on 4 missions:
 - Reducing encampments to bring unsheltered people indoors
 - Increasing interim and permanent housing placements
 - Ramping up mental health and substance use disorder services for people experiencing homelessness
 - Eviction prevention (this mission was added on October 3, 2023)

1

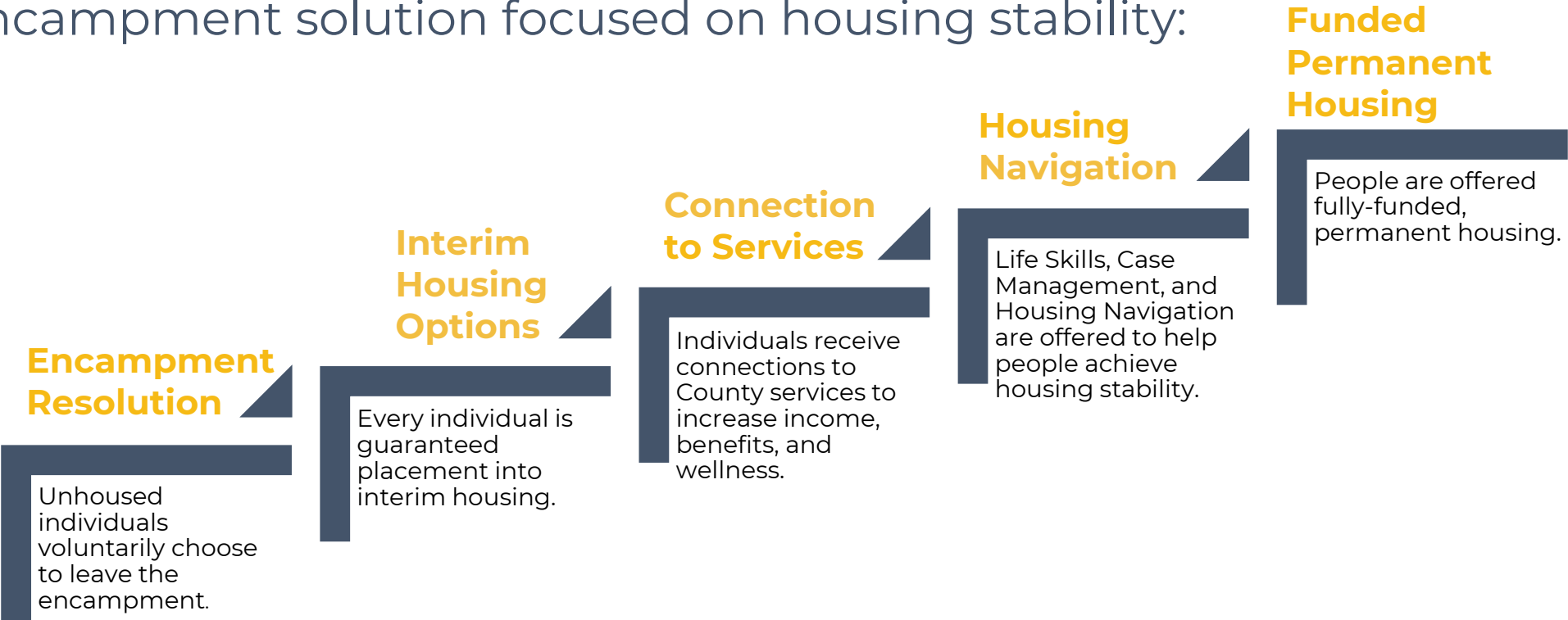
LA County's Framework for Encampments

LA County has 88 cities and over 120 unincorporated areas with over 50k unsheltered on any given night.



2 What is Pathway Home?

The LA County Board of Supervisors is investing **\$108M** in local FY 2025 resources for our full-circle encampment solution focused on housing stability:



2

Results: Pathway Home Operations

Operations Since August 2023

1. Lennox/Inglewood
2. West Rancho Dominguez (RV)
3. Hawthorne #1
4. Unincorporated East Gardena (RV)
5. Pomona
6. Lynwood
7. Rio Hondo/Santa Fe Dam
8. Unincorporated Walnut Park (RV)
9. Compton
10. North Long Beach
11. Hawthorne #2
12. Santa Monica
13. West Rancho Dominguez/Victoria (RV)
14. Long Beach/Signal Hill
15. Monrovia/Duarte
16. City of LA/Unincorporated Westmont (RV)
17. Palmdale #1 (RV)
18. Palmdale #2
19. Palmdale #3



Pathway Home

A Los Angeles County-led Partnership
for Encampment Resolution

How

L.A. County prioritizes
Encampment Resolution Sites

Across L.A. County's **5 districts**, there are hundreds of encampments that deserve to be prioritized for a resolution that puts people on a path to **permanent housing** stability. So how do we prioritize scarce resources in an equitable way?

Sites are prioritized according to:



Encampments whose residents are members of demographic groups that have been **disproportionately impacted by homelessness and poverty.**



Sites in **communities** which have been disproportionately impacted by homelessness and poverty.



The **size** and **scale** of the encampment.



Availability of **interim and permanent housing resources**, in the community or ability to quickly add these resources nearby.



The **potential for elevated harm** to encampment residents and neighboring communities from fires, flash floods, or other hazards.



The strength of existing trusted relationships between **outreach partners** and encampment residents.

2

Visit our website to learn more:
<https://homeless.lacounty.gov/pathway-home/>

Pathway Home Data Dashboard

Following the completion of a Pathway Home encampment resolution, data will be collected, reconciled, and posted online. Please allow 72 – 96 hours for updates to occur. Data on Individuals Permanently Housed is updated quarterly.

Pathway Home formally launched on August 9, 2023.

The below data are current as of August 31, 2024.

This Pathway Home dashboard excludes data from our encampment resolution partnership with the City of Los Angeles.



Total Encampment Resolutions

19



Individuals Moved into Interim Housing

783



Recreational Vehicles (RVs) Removed

496



Individuals Permanently Housed

131

3 Inside Safe Collaboration

What is LA County's Role?

Operational Planning

Coordination & Communication

Service Connections

Inside Safe By the Numbers

Inside Safe is one component of a comprehensive strategy that brought more than 21,000 Angelenos inside during the Mayor's first year in office.



Angelenos Moved Indoors Through Inside Safe

3,080

Part of the More Than 21,000 People
Who Have Moved Indoors Since December 12, 2022



Angelenos Permanently Housed Through Inside Safe

697

Part of the More Than 5,000 People
Who Have Moved Into Permanent Housing Since December 12, 2022



Total Encampments Addressed By Inside Safe

62



Council Districts Where Operations Have Taken Place

15